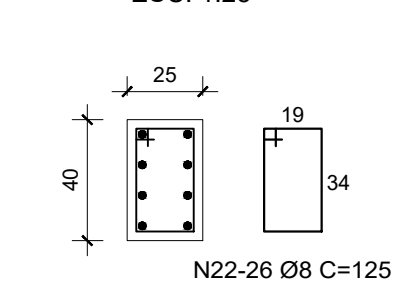
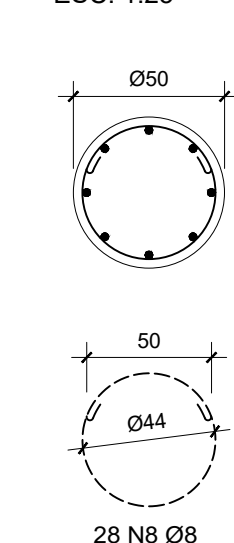
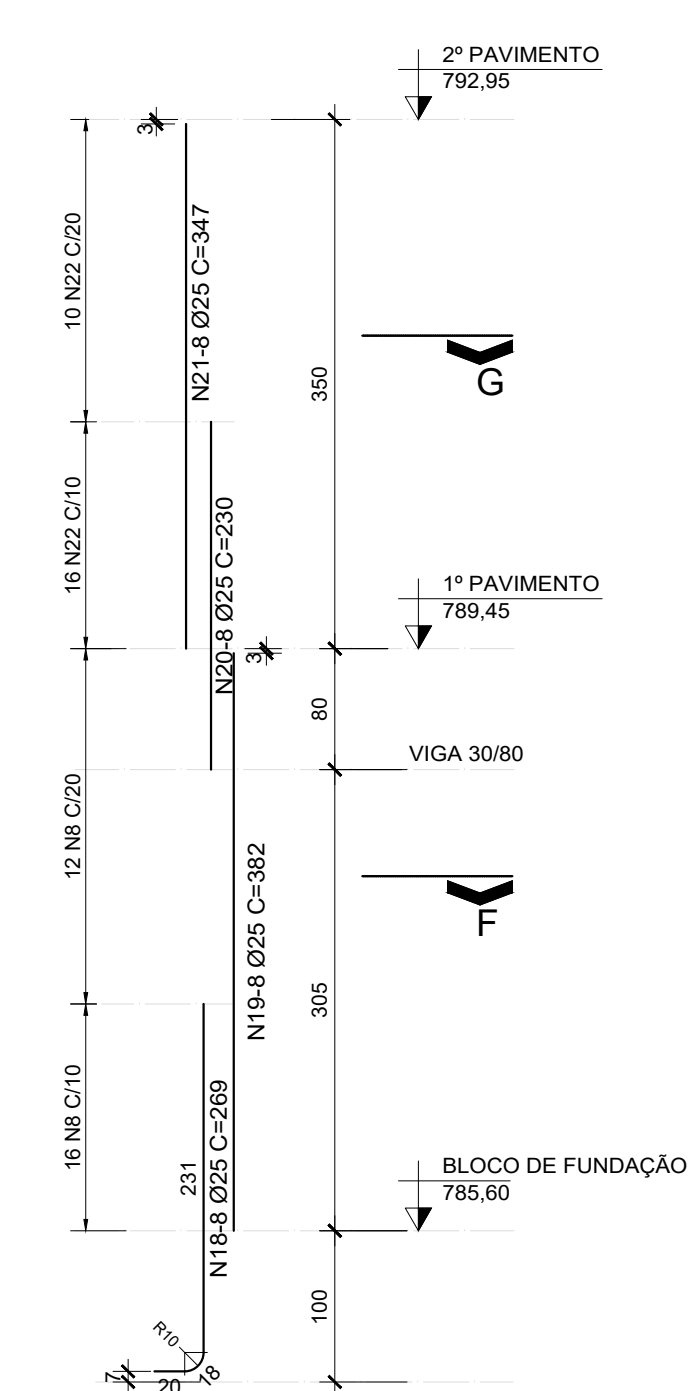
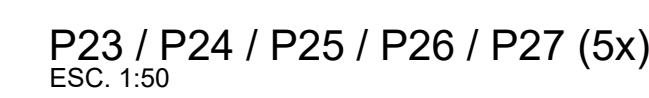
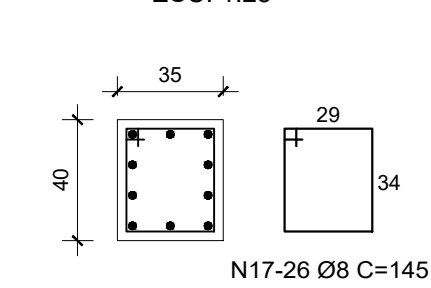
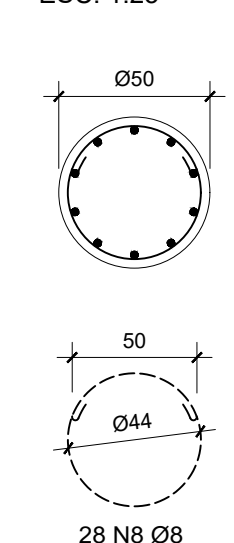
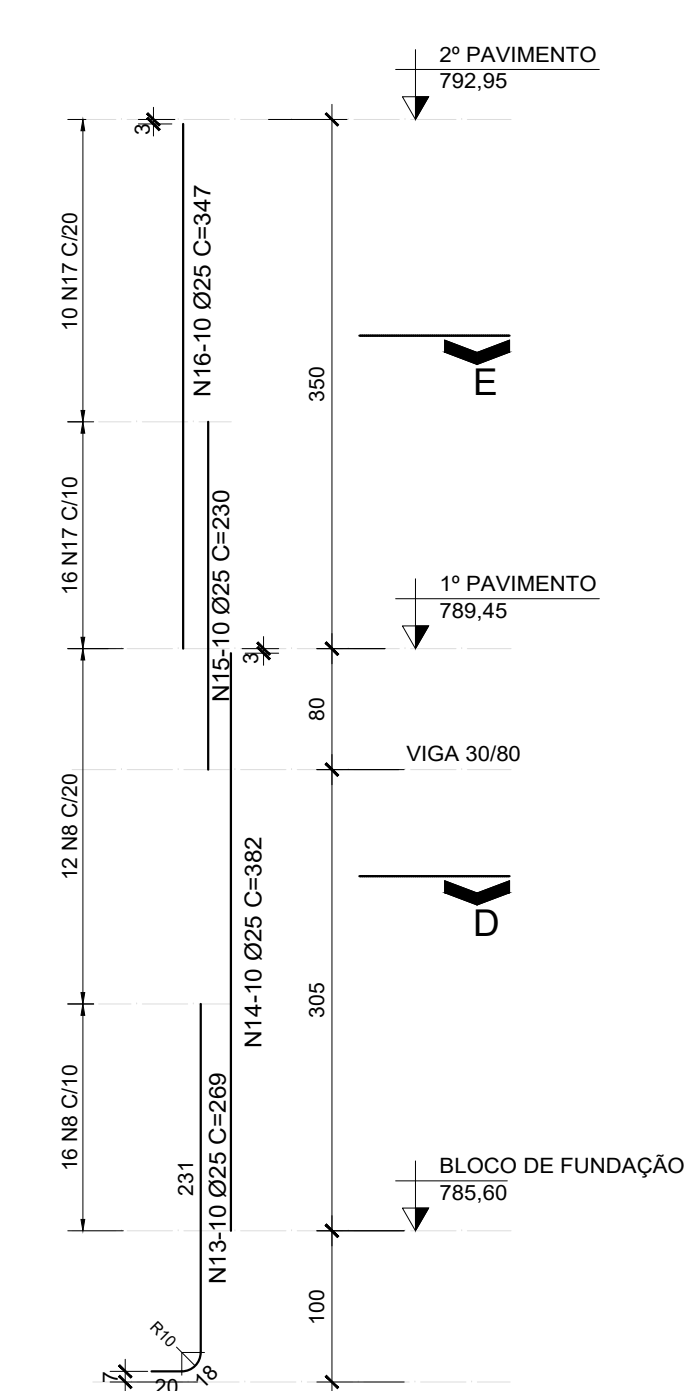
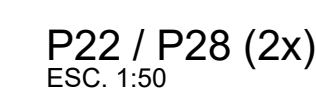


N	Ø	COMPRIMENTOS		
		Q	LIMIT	TESTA/L
1	25	112	269	30123
2	25	112	437	40944
3	8	217	235	58985
4	16	56	185	10380
5	16	56	455	27160
6	16	56	480	25200
7	16	56	272	15232
8	8	672	205	137760
9	25	84	206	22596
10	25	84	335	44940
11	25	84	347	28148
12	8	378	115	58590
13	20	209	209	33330
14	25	20	382	7640
15	25	20	347	6940
16	8	8	142	7540
17	8	8	329	10760
18	8	8	382	15280
19	25	40	237	3470
20	25	40	347	13860
21	25	40	230	16290
22	8	130	125	16290

RESUMO CA-50			
Ø (mm)	kg/m	COMPR.(m)	PESO (kg)
8	0.40	2711.35	1085
16	1.60	779.52	1247
25	4.00	2494.36	9977
TOTAL:			12309



NOTAS:

- 1- MEDIDAS EM CENTÍMETRO.
- 2- MATERIAIS:
 - CONCRETO ESTRUTURAL $f_{ck} = 30 \text{ MPa}$ (FATOR A/C=0,5)
 - AÇO SAO
- 3- COBRIMENTO DAS ARMADURAS:
 $c = 3,0 \text{ cm}$
- 4- VERIFICAR TODAS AS MEDIDAS E NÍVEIS NA OBRA.
- 5- O CONTROLE TECNOLÓGICO PARA GARANTIA DA QUALIDADE DOS MATERIAIS E SERVIÇOS DEVERÁ SER CONFORME AS RECOMENDAÇÕES CONSTANTES DAS SEGUINTES NORMAS DA ABNT: NBR12655, NBR1740, NBR 7481, NBR 7482 E NBR 7483.

[illegible]